

**Micron Profile Data for the Australian Wool Clip based on AWTA Ltd Test Data**

Copyright for these data is retained by AWTA Ltd. The data can be used for educative and commercial purposes provided the source is acknowledged.

DISCLAIMER:

While every effort has been made to ensure the accuracy of the data contained in this document, AWTA Ltd assumes no responsibility for errors or omissions or any consequences of reliance on these data.

Season	PERCENTAGE OF TOTAL											Avgd MFD	%≤19.5		
	0.0-16.5	16.6-17.5	17.6-18.5	18.6-19.5	19.6-20.5	20.6-21.5	21.6-22.5	22.6-23.5	23.6-24.5	24.6-25.5	26.6-28.5			28.6-30.5	30.6+
91-92	0.01%	0.68%	3.20%	7.95%	15.16%	21.47%	20.02%	13.36%	7.11%	5.49%	2.86%	1.62%	1.01%	22.04	11.91%
92-93	0.01%	0.28%	1.87%	5.40%	12.04%	19.91%	20.56%	15.89%	9.96%	7.90%	2.99%	1.90%	1.58%	22.39	7.57%
93-94	0.05%	0.47%	2.43%	5.89%	12.09%	18.76%	20.84%	15.89%	10.03%	7.42%	2.76%	1.91%	1.66%	22.43	8.84%
94-95	0.08%	0.61%	3.50%	8.50%	15.22%	20.89%	19.89%	13.95%	8.96%	7.07%	2.81%	2.01%	1.73%	22.03	12.79%
95-96	0.04%	0.60%	3.25%	8.16%	15.30%	20.75%	18.48%	13.24%	8.10%	5.96%	2.70%	1.85%	1.57%	22.10	12.06%
96-97	0.15%	0.81%	3.86%	9.71%	15.31%	20.05%	18.26%	13.13%	7.41%	5.29%	2.31%	1.91%	1.80%	22.01	14.52%
97-98	0.21%	1.17%	4.47%	9.84%	14.81%	19.42%	18.26%	12.85%	7.69%	5.35%	2.57%	1.84%	1.51%	21.92	15.70%
98-99	0.19%	1.1%	4.17%	8.94%	14.57%	19.65%	18.52%	14.00%	7.53%	5.13%	2.57%	2.04%	1.46%	21.88	14.28%
99-00	0.14%	0.95%	4.24%	9.27%	14.39%	19.10%	18.22%	13.55%	7.69%	5.21%	2.91%	2.45%	1.88%	22.09	14.60%
00-01	0.22%	1.34%	5.17%	11.07%	15.71%	18.53%	16.39%	11.37%	6.76%	5.13%	3.61%	2.82%	1.86%	21.96	17.81%
01-02	0.32%	2.00%	7.20%	14.36%	19.91%	18.90%	12.90%	7.75%	4.07%	3.72%	3.80%	3.14%	1.93%	21.62	23.88%
02-03	1.01%	3.7%	9.75%	16.78%	20.49%	17.55%	12.00%	6.80%	3.36%	3.75%	2.90%	3.22%	2.06%	21.24	33.31%
03-04	0.70%	3.59%	9.90%	15.83%	18.30%	16.58%	11.92%	7.48%	3.65%	3.50%	3.84%	2.88%	1.84%	21.31	30.02%
04-05	1.53%	4.58%	10.73%	16.23%	18.18%	15.61%	10.52%	6.19%	3.15%	3.58%	4.31%	3.37%	2.02%	21.20	33.07%
05-06	1.45%	4.67%	9.7%	15.15%	18.70%	17.14%	11.50%	5.86%	2.88%	3.93%	4.47%	2.95%	1.60%	21.23	30.99%
06-07	2.05%	5.22%	11.77%	13.98%	15.92%	13.92%	8.39%	4.15%	3.22%	4.41%	3.22%	2.66%	1.51%	21.00	44.35%
07-08	1.95%	5.30%	10.53%	16.83%	18.38%	14.23%	9.15%	5.51%	2.99%	4.12%	4.82%	3.55%	2.18%	21.21	35.00%
08-09	2.03%	5.70%	11.44%	16.83%	18.50%	14.95%	9.07%	4.40%	2.27%	3.85%	5.12%	3.84%	2.20%	21.15	36.00%
09-10	2.30%	6.17%	12.64%	17.13%	17.50%	13.18%	8.35%	4.58%	2.46%	4.13%	5.39%	3.86%	2.30%	21.20	38.24%
10-11	1.84%	5.63%	11.98%	17.13%	16.58%	12.30%	8.26%	5.31%	2.91%	4.24%	5.83%	4.66%	3.31%	21.45	36.58%
11-12	1.94%	5.63%	11.98%	17.13%	16.58%	12.30%	8.26%	5.31%	2.91%	4.24%	5.83%	4.66%	3.31%	21.21	35.41%
12-13	2.55%	6.97%	13.27%	17.47%	16.75%	11.96%	7.27%	4.09%	2.34%	4.64%	6.24%	3.96%	2.41%	21.18	40.26%
13-14	3.83%	8.42%	14.55%	17.79%	15.99%	10.85%	6.23%	3.41%	2.15%	5.22%	6.36%	3.12%	2.08%	20.74	44.60%
14-15	3.19%	7.53%	14.76%	18.48%	15.84%	10.55%	6.47%	3.45%	1.92%	4.38%	6.53%	3.88%	2.62%	21.00	44.35%
15-16	3.93%	8.54%	15.86%	17.82%	16.18%	10.77%	5.97%	2.98%	1.80%	4.87%	6.58%	3.69%	2.72%	21.10	44.89%
16-17	3.59%	7.54%	13.44%	17.46%	17.17%	12.15%	6.87%	3.43%	2.03%	4.39%	5.83%	3.43%	2.68%	21.00	42.03%
17-18	3.23%	8.62%	15.44%	18.81%	16.12%	10.22%	5.67%	2.92%	1.81%	4.13%	6.02%	3.98%	3.24%	20.90	45.90%
18-19	5.83%	11.59%	18.48%	19.28%	13.27%	6.87%	3.84%	2.42%	1.90%	5.05%	5.72%	2.89%	2.86%	20.50	55.18%
19-20	10.98%	18.85%	20.29%	14.34%	6.98%	3.88%	2.08%	2.88%	1.80%	4.47%	6.84%	2.87%	2.76%	20.90	65.41%
20-21	3.79%	8.93%	17.18%	20.45%	16.04%	9.82%	4.41%	2.27%	1.64%	3.59%	5.40%	3.51%	2.85%	20.80	50.35%

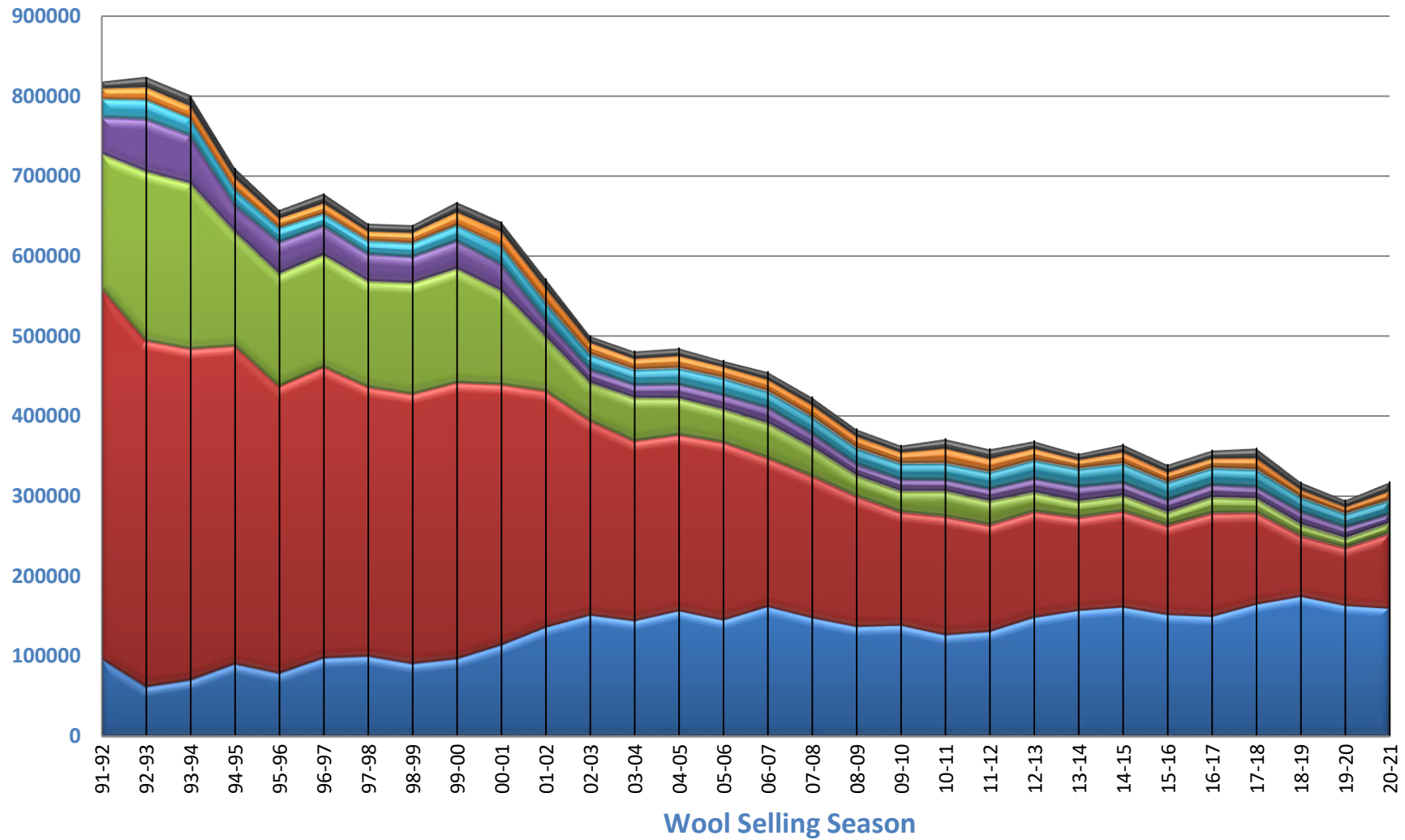
Season	GREASY WEIGHT (KGS)												TOTAL	
	0.0-16.5	16.6-17.5	17.6-18.5	18.6-19.5	19.6-20.5	20.6-21.5	21.6-22.5	22.6-23.5	23.6-24.5	24.6-25.5	26.6-28.5	28.6-30.5		30.6+
91-92	670740	5557311	26138188	64957903	123890046	175505584	163627913	109172302	58150278	44882681	23349412	13281166	8270858	81745482
92-93	123348	2319199	15373163	44488951	99190418	163996409	169329653	128425942	82027770	65031108	24939322	15685669	12991429	82357621
93-94	419763	3791901	19462793	47120638	96748193	150184810	168947982	125565489	80313135	59384994	22075523	15312252	13258773	800485244
94-95	38942	4345336	24823338	61989158	10810237	14195294	14195294	134019347	334019157	334019157	19576798	14238623	12251212	710196506
95-96	259878	3979450	21391231	53688188	100632705	136510719	112662794	87132856	53304979	39201512	17326883	12153379	10328987	65787951
96-97	1032192	5477267	26155430	65862988	103837068	136040559	123864211	89090155	50295021	35904679	15685783	12930531	12223063	678398927
97-98	1347801	7524392	28675143	63083167	94946275	124511579	11704492	82346076	49294809	34305774	16444313	11825345	9657990	640897056
98-99	1718526	26662222	56452360	93098773	12533329	118947970	8943304	48716963	32756692	17600709	13035568	83823825	63872825	678398927
99-00	920395	3646091	28332353	61896435	96067901	127524068	161637637	90476471	51343971	34798125	19395659	16347170	12572697	667659073
00-01	1445330	8604859	33825853	71235199	101075243	118988818	105426860	37139796	43462030	32976550	18169828	18169828	64321077	64321077
01-02	1842588	11435472	41172661	82161502	113891967	108909426	73777411	44325147	23269964	21253299	21764090	17971537	11041072	572001304
02-03	5075698	19372547	68885510	78501594	9490112	89174907	50123831	33094350	14541533	16816335	16429004	14542804	8281650	50125241
03-04	3366754	17315697	47697425	76252477	88154869	79867236	57444524	36020797	17565567	16860462	18511465	13867058	8807563	481795001
04-05	5851113	20429351	51222136	79956527	90790936	77485713	52078133	30193929	15608500	12011069	15248821	9525990	485859109	485859109
05-06	6797134	21947680	45766166	71320283	87928329	80606829	54073457	27588431	13523063	18462176	21026675	13866124	7522720	470319897
06-07	7100338	2395588	9275628	72576237	7329917	38339892	45207710	8607934	1535355	4578454	2012057	1817137	9335568	45235545
07-08	8257651	22481741	46407161	71417783	78018601	6054407	3842938	23841116	12995579	17493268	20447414	15089152	9272955	424466526
08-09	7889758	21899191	43995063	63910570	71111137	57489910	34863187	18933378	8722336	14799796	19699409	14793116	8457239	38443686
09-10	8391124	22468835	46037922	62761123	63728572	47972836	30405031	16672351	8999522	15034326	19630852	14063851	8377025	364097252
10-11	11696293	17977769	42966143	67062070	67062070	61305963	30963963	19833368	14541777	14541777	16544543	11577042	6179597	6179597
11-12	6622564	20227214	43058960	61605617	59622882	44243328	29702859	19105888	10407555	15207895	20962186	16771790	11903683	358552715
12-13	9420155	25727798	49071822	64609588	61940814	44214922	26901814	15129364	8668026	17157430	23062414	14636312	9202331	398780860
13-14	13355349	29740390	51479211	62942358	56558590	38374833	22024102	12067024	7607962	18458098	22481939	11019818	7352798	353688910
14-15	1162491	2909511	52941112	67557058	57920109	38567964	23856463	12628904	7017743	16001080	23859018	14198112	9583301	355569896
15-16	13385453	29052290	49526669	60940350	55009631	36609611	20304335	9876399	6354225	15573131	22218390	12327991	9427505	340061863
16-17	12860137	26990050	48099144	62492365	61482424	43484214	24581963	12286668	7250901	15728715	20856138	12276642	9581586	35742765
17-18	11628035	3106955	55634386	6707824	58086647	34828312	20442942	10531467	6509957	14878237	21679200	14356668	11691060	360409890
18-19	1844286	3884595	9674295	1308116	42198415	21650860	12221423	7709657	6031134	16061458	18173199	9178126	9094928	317695792
19-20	16441918	3427193	5260356	60007245	62443309	42460277	14199230	6249824	5313088	13881587	16878399	8238991	8474989	289803784
20-21	12076880	2842859	54710239	60105703	51064407	29530722	14047688	7240282	5211036	11429117	12702425	11165079	11163046	31878283

Season	GREASY WEIGHT (Tonnes)												TOTAL	
	0.0-16.5	16.6-17.5	17.6-18.5	18.6-19.5	19.6-20.5	20.6-21.5	21.6-22.5	22.6-23.5	23.6-24.5	24.6-25.5	26.6-28.5	28.6-30.5		30.6+
91-92	671	5557	26138	64958	123890	175506	163628	109172	58150	44883	23349	13281	8271	81745
92-93	123	2319	15373	44489	99190	163996	169330	128426	82028	65031	24939	15686	12991	82358
93-94	419	3792	19463	47121	96748	150185	168948	125566	80313	59385	22076	15312	13259	800485
94-95	40	4345	24823	61989	10810	14195	14195	13402	33402	33402				



## Wool Production (kgs) in Micron Bands : 1992 - 2021

■ 30.6+ ■ 28.5-30.5 ■ 26.6-28.5 ■ 24.6-26.5 ■ 22.6-24.5 ■ 19.6-22.5 ■ 0.00-19.5





## Australian Wool Clip Average MFD : 1992 to 2018

