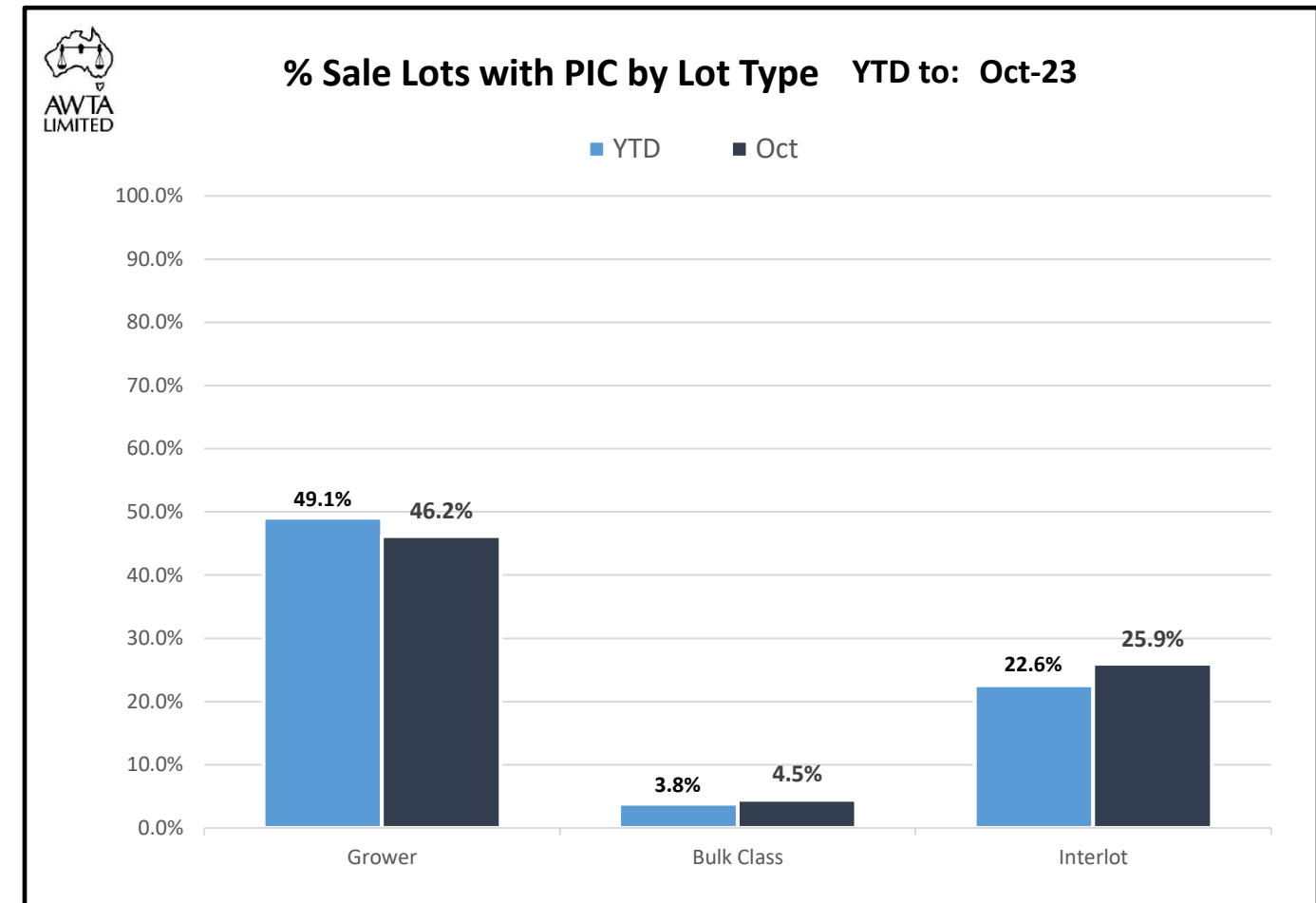
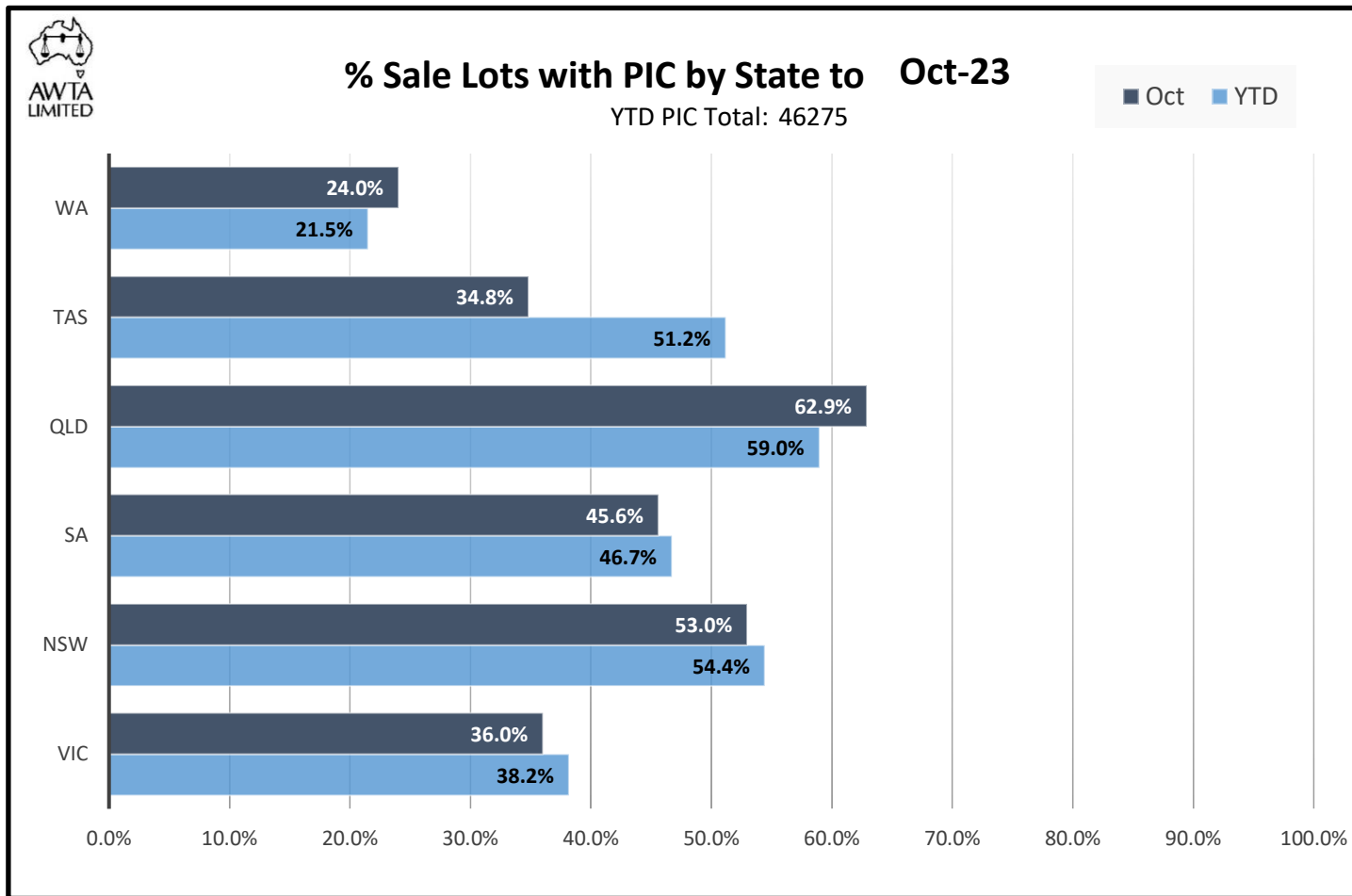
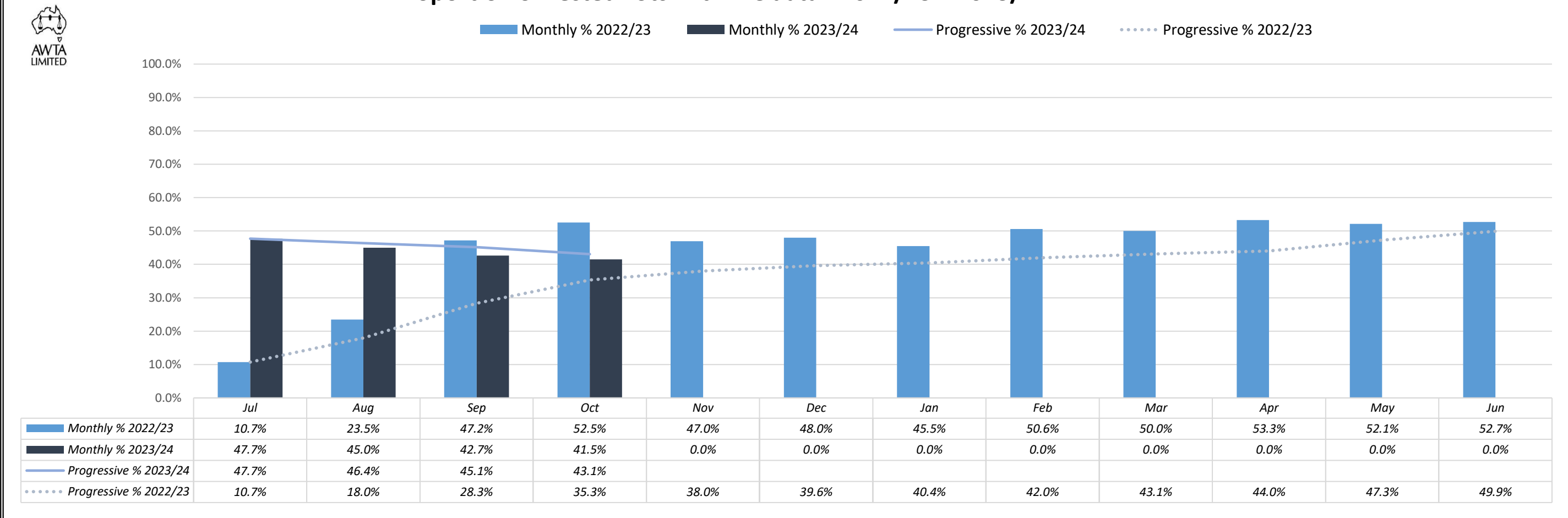


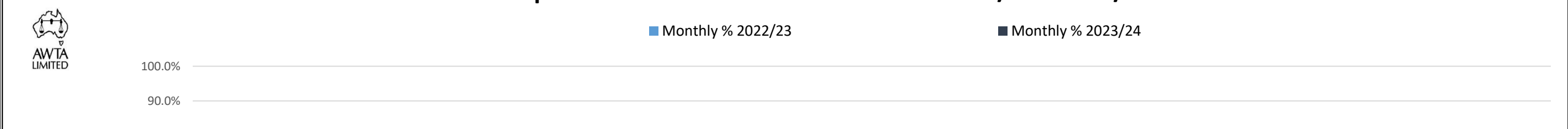
Australian Wool Industry Property Identification Code (PIC) Transmission Analysis

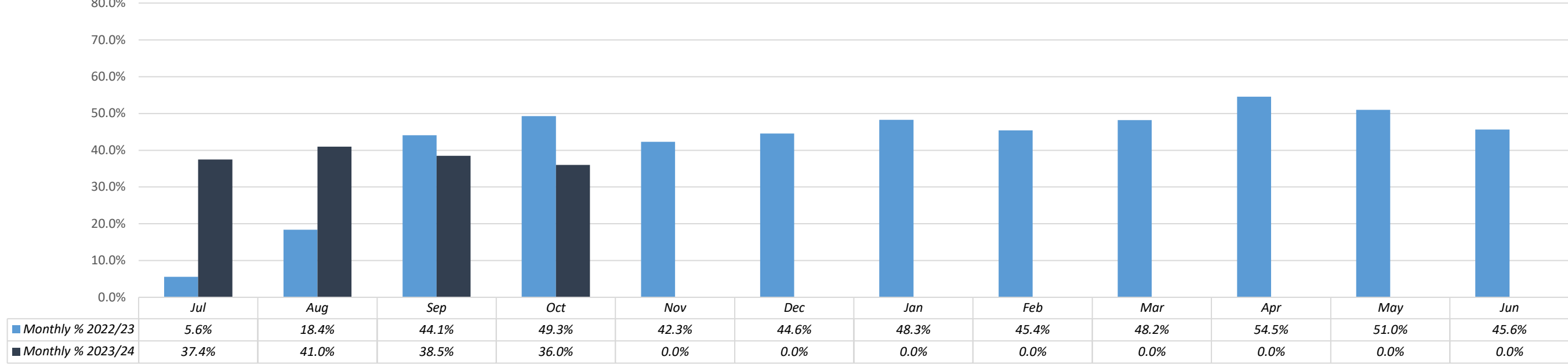


Proportion of Tested Lots with PIC data - 2022/23 v 2023/24

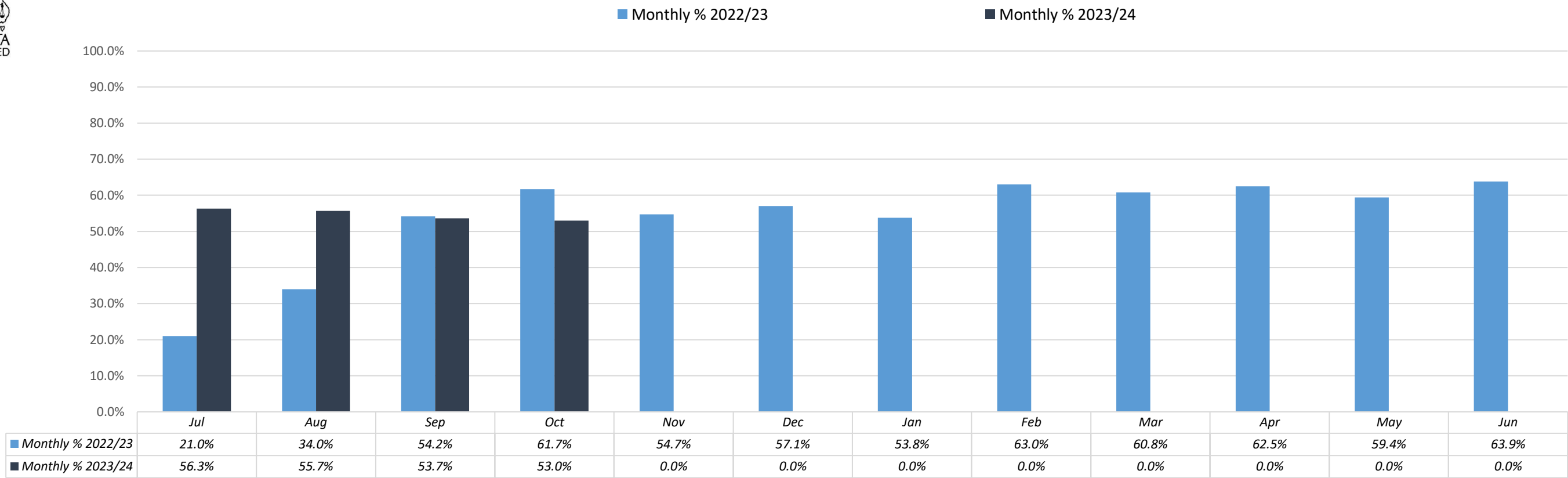


Victoria : Proportion of Tested Lots with PIC data - 2022/23 v 2023/24

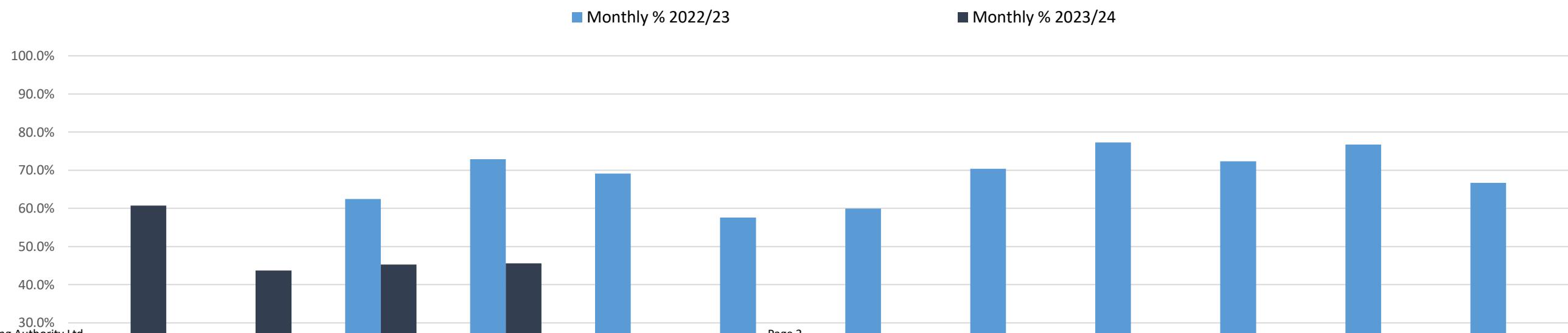


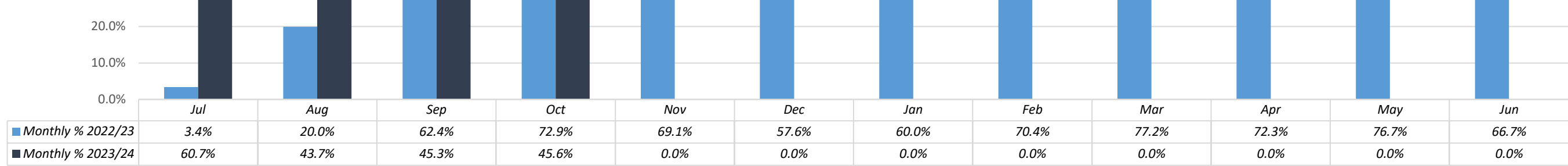


New South Wales : Proportion of Tested Lots with PIC data - 2022/23 v 2023/24

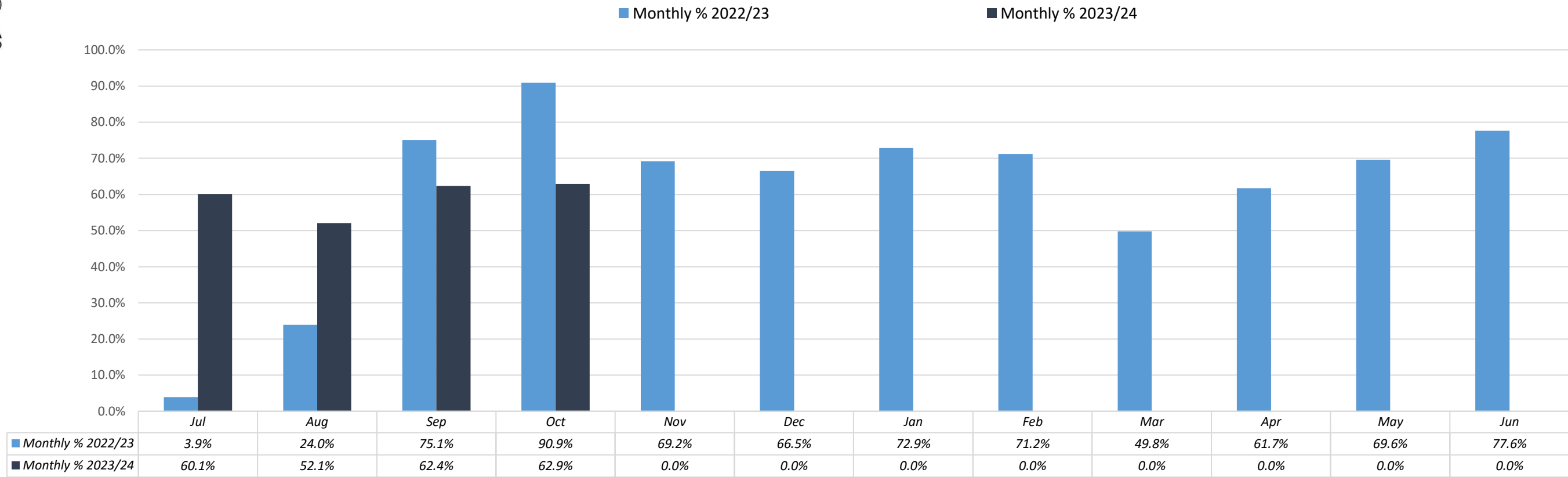


South Australia : Proportion of Tested Lots with PIC data - 2022/23 v 2023/24

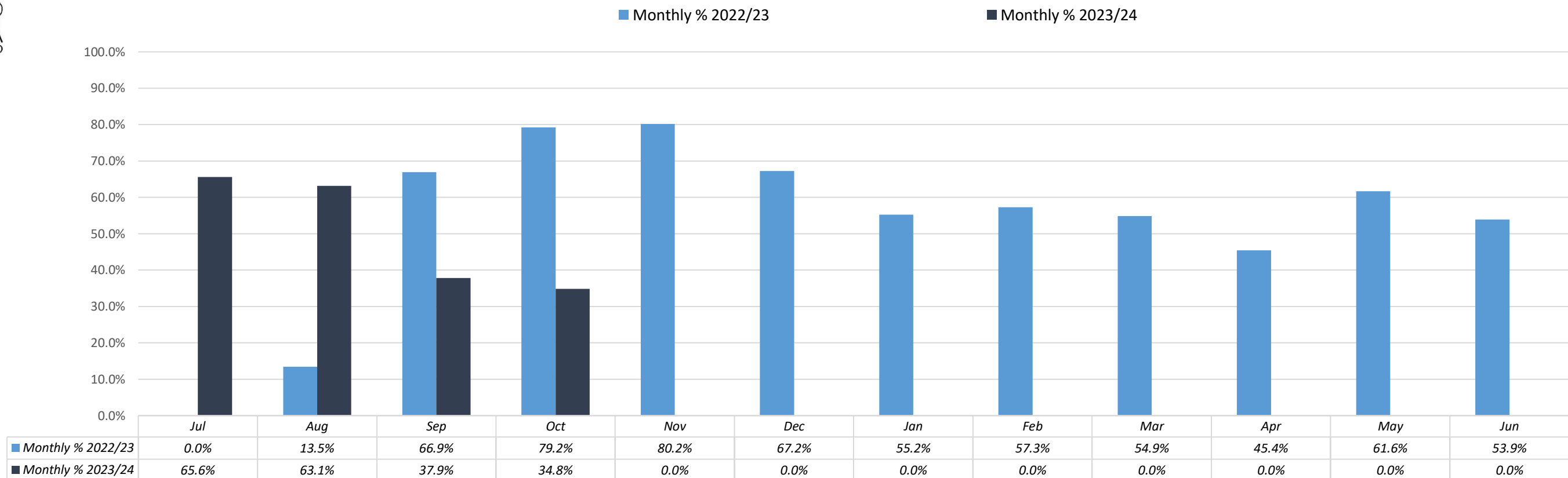




Queensland : Proportion of Tested Lots with PIC data - 2022/23 v 2023/24



Tasmania : Proportion of Tested Lots with PIC data - 2022/23 v 2023/24



Western Australia : Proportion of Tested Lots with PIC data - 2022/23 v 2023/24

