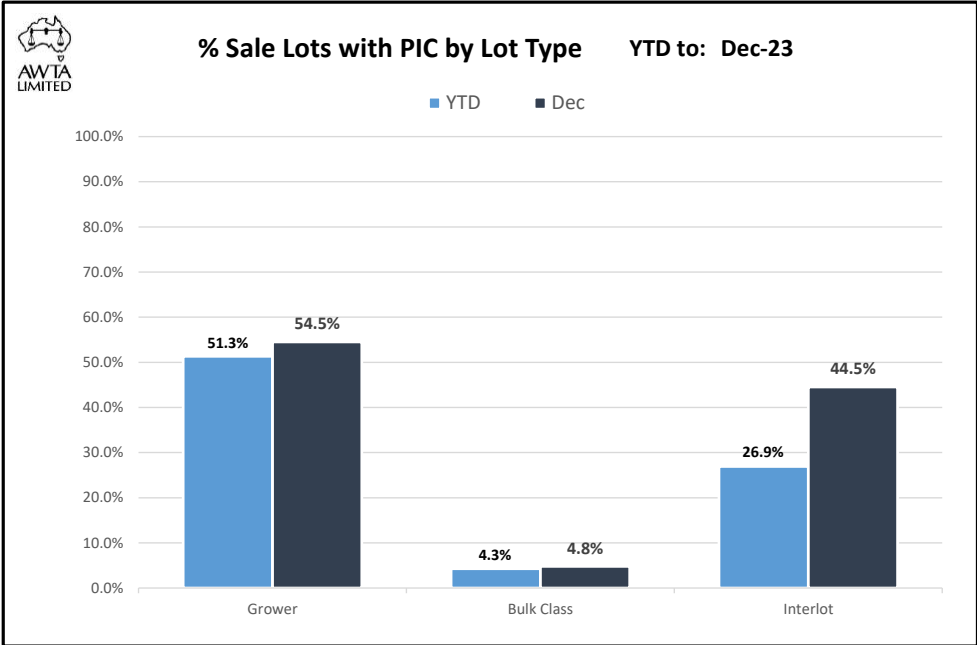
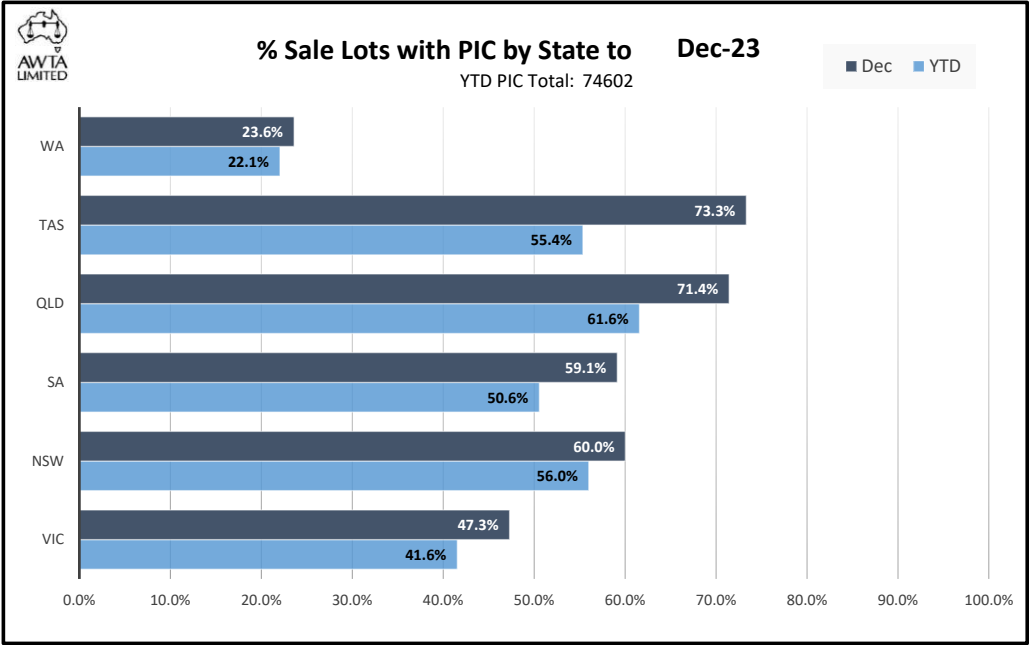
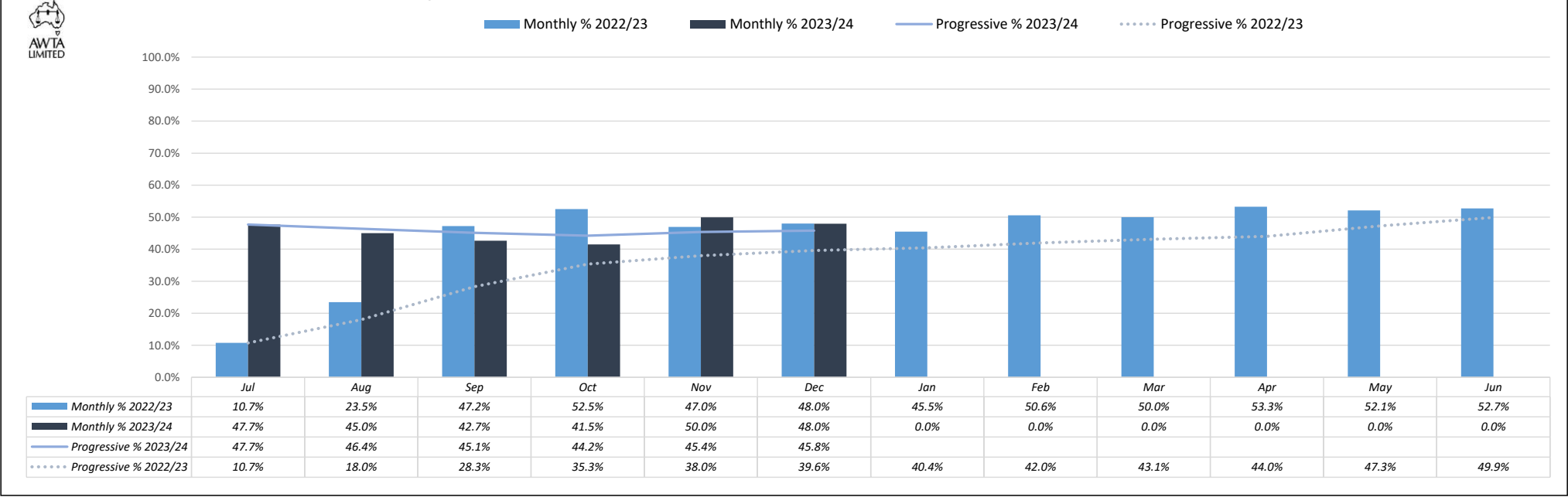


Australian Wool Industry Property Identification Code (PIC) Transmission Analysis

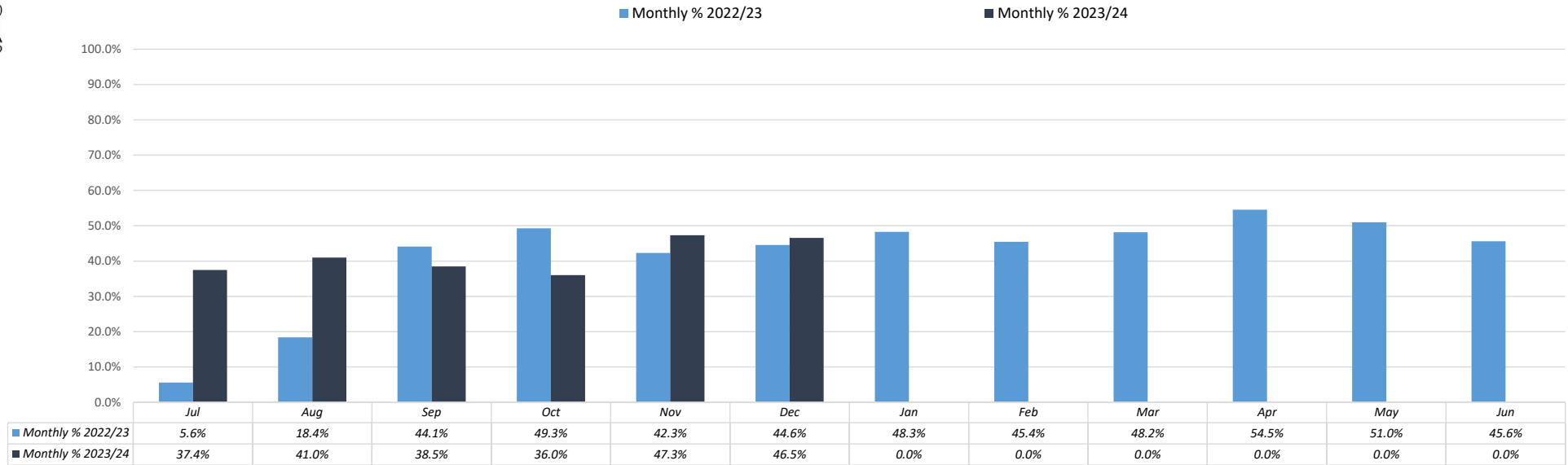


Proportion of Tested Lots with PIC data - 2022/23 v 2023/24

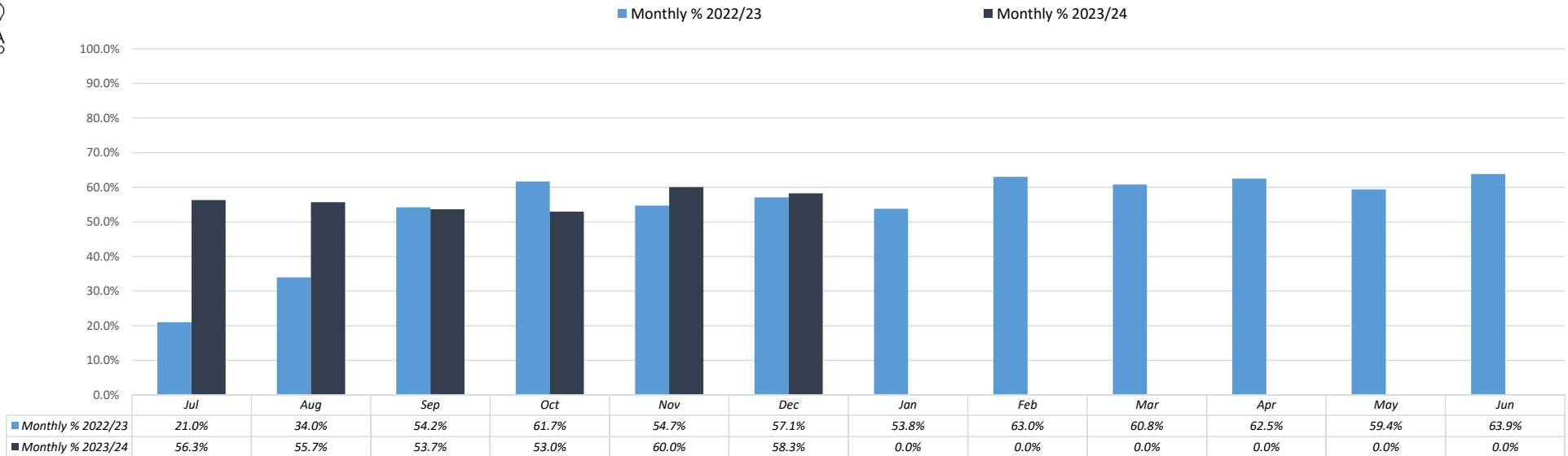




Victoria : Proportion of Tested Lots with PIC data - 2022/23 v 2023/24

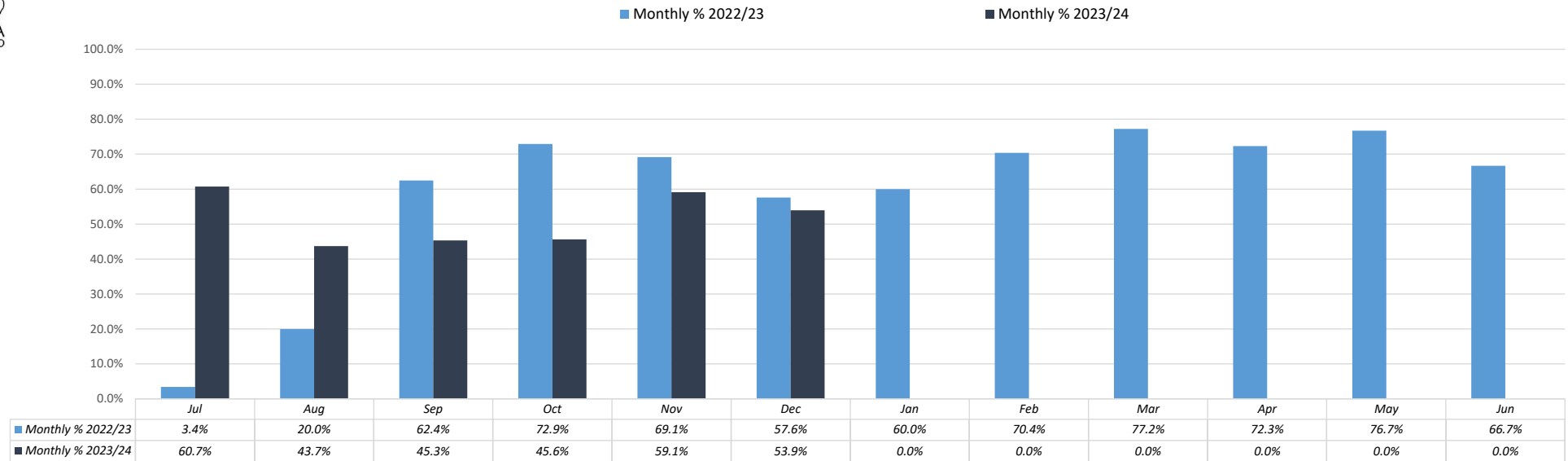


New South Wales : Proportion of Tested Lots with PIC data - 2022/23 v 2023/24

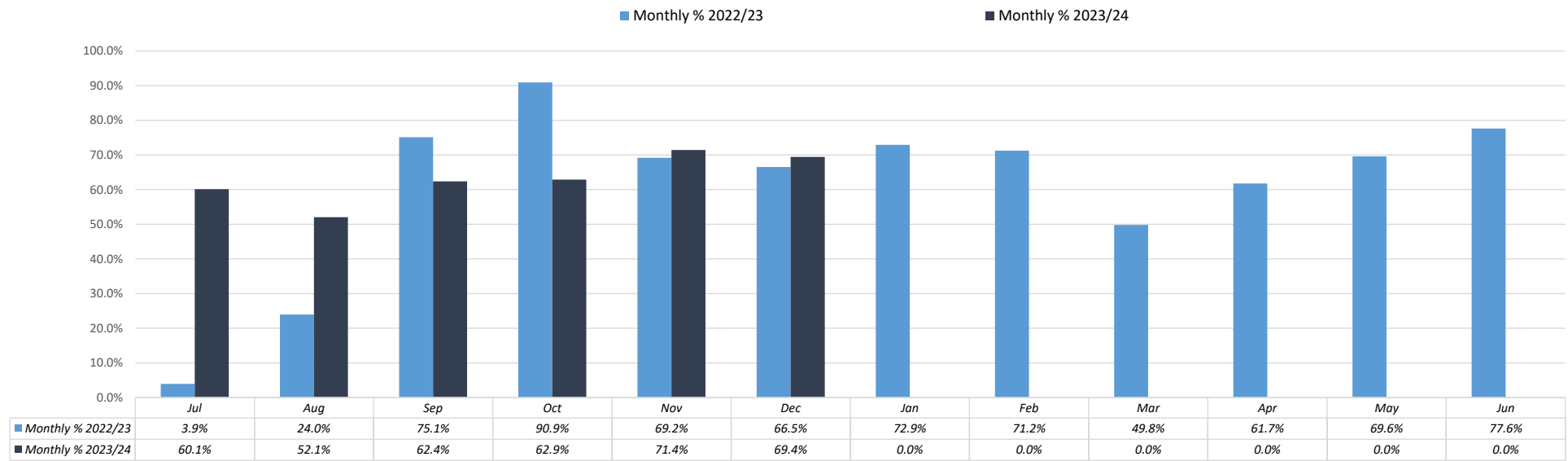




South Australia : Proportion of Tested Lots with PIC data - 2022/23 v 2023/24

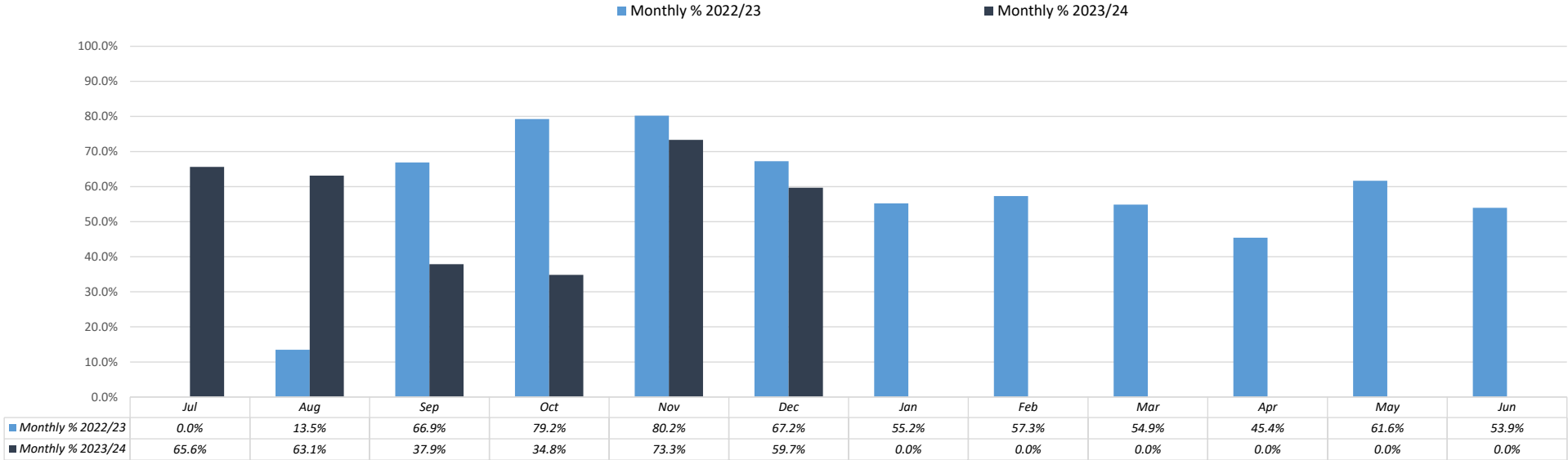


Queensland : Proportion of Tested Lots with PIC data - 2022/23 v 2023/24





Tasmania : Proportion of Tested Lots with PIC data - 2022/23 v 2023/24



Western Australia : Proportion of Tested Lots with PIC data - 2022/23 v 2023/24

