



Micron Profile Data for the Australian Wool Clip based on AWTA Ltd Test Data

Copyright for these data is retained by AWTA Ltd. The data can be used for educative and commercial purposes provided the source is acknowledged.

DISCLAIMER:

While every effort has been made to ensure the accuracy of the data contained in this document, AWTA Ltd assumes no responsibility for errors or omissions or any consequences of reliance on these data.

Current as of: 30/06/2023

Season	PERCENTAGE OF TOTAL															Avgd MFD	%<19.5
	0.0-16.5	16.6-17.5	17.6-18.5	18.6-19.5	19.6-20.5	20.6-21.5	21.6-22.5	22.6-23.5	23.6-24.5	24.6-25.5	26.6-28.5	28.6-30.5	30.6+				
91-92	0.08%	0.68%	3.20%	7.95%	15.16%	21.47%	20.02%	13.36%	7.11%	5.49%	2.86%	1.62%	1.01%	22.04	11.91%		
92-93	0.15%	0.28%	1.37%	5.40%	12.04%	19.91%	20.50%	15.99%	9.36%	7.90%	2.99%	1.90%	1.59%	22.39	7.57%		
93-94	0.05%	0.47%	2.43%	5.89%	12.09%	18.76%	20.84%	15.69%	10.03%	7.42%	2.76%	1.91%	1.68%	22.43	8.84%		
94-95	0.08%	0.61%	3.50%	8.60%	15.22%	20.86%	19.89%	13.03%	6.96%	5.21%	2.01%	1.73%	1.27%	22.03	12.79%		
95-96	0.04%	0.60%	3.25%	8.16%	15.30%	20.75%	18.48%	13.24%	8.10%	5.96%	2.70%	1.85%	1.57%	22.10	12.06%		
96-97	0.15%	0.81%	3.86%	9.71%	15.31%	20.05%	18.26%	13.13%	7.41%	5.29%	2.31%	1.91%	1.80%	22.01	14.52%		
97-98	0.21%	1.17%	4.47%	9.84%	14.81%	19.42%	18.26%	12.85%	7.69%	5.25%	2.57%	1.84%	1.51%	21.92	15.70%		
98-99	0.16%	1.11%	4.17%	8.84%	14.57%	19.60%	18.62%	14.00%	7.63%	5.13%	2.67%	2.04%	1.46%	21.98	14.28%		
99-00	0.14%	0.95%	4.24%	9.27%	14.39%	19.10%	18.22%	13.55%	7.69%	5.21%	2.91%	2.45%	1.89%	22.09	14.60%		
00-01	0.22%	1.34%	5.17%	11.07%	15.71%	18.55%	16.39%	11.37%	6.76%	5.13%	3.61%	2.82%	1.86%	21.96	17.81%		
01-02	0.32%	2.00%	7.20%	14.36%	19.91%	18.90%	12.90%	7.75%	4.07%	3.72%	3.80%	3.14%	1.93%	21.62	23.88%		
02-03	1.01%	3.87%	9.75%	15.68%	18.93%	17.59%	12.00%	6.60%	2.90%	3.37%	2.90%	1.66%	1.21	20.31	30.11%		
03-04	0.70%	3.59%	9.90%	15.83%	18.30%	16.58%	11.92%	7.48%	3.65%	3.50%	3.84%	2.88%	1.84%	21.31	30.02%		
04-05	1.53%	4.58%	10.73%	16.22%	18.15%	15.61%	10.52%	6.19%	3.16%	3.58%	4.31%	3.37%	2.02%	21.20	33.07%		
05-06	1.45%	4.67%	9.73%	15.15%	18.70%	17.14%	11.50%	5.86%	2.88%	3.93%	4.47%	2.95%	1.60%	21.23	30.99%		
06-07	2.00%	5.92%	11.79%	15.90%	16.95%	13.99%	9.93%	6.15%	3.36%	4.33%	4.41%	3.22%	2.06%	21.06	35.61%		
07-08	1.95%	5.30%	10.93%	16.83%	18.38%	14.29%	9.15%	5.51%	2.99%	4.12%	4.82%	3.55%	2.18%	21.21	35.00%		
08-09	2.00%	6.70%	11.44%	16.83%	18.50%	14.95%	9.07%	4.40%	2.27%	4.86%	5.12%	3.84%	2.20%	21.15	36.00%		
09-10	2.30%	6.17%	12.64%	17.13%	17.50%	13.18%	8.35%	4.58%	2.46%	4.13%	5.39%	3.86%	2.30%	21.20	38.24%		
10-11	1.84%	5.63%	11.98%	17.13%	16.58%	12.30%	8.26%	5.31%	2.91%	4.24%	5.83%	4.66%	3.31%	21.21	36.58%		
11-12	1.84%	5.63%	11.98%	17.13%	16.58%	12.30%	8.26%	5.31%	2.91%	4.24%	5.83%	4.66%	3.31%	21.21	36.58%		
12-13	2.45%	6.97%	12.27%	17.47%	17.17%	11.96%	7.27%	4.09%	2.34%	4.64%	6.24%	4.96%	2.49%	21.18	40.28%		
13-14	3.82%	8.42%	14.55%	17.79%	15.99%	10.85%	6.23%	3.41%	2.15%	2.55%	6.38%	3.12%	2.08%	20.74	44.60%		
14-15	3.18%	7.93%	14.76%	18.48%	15.84%	10.55%	6.47%	3.45%	1.92%	4.38%	6.53%	3.88%	2.62%	21.00	44.35%		
15-16	3.33%	8.54%	14.56%	17.82%	16.18%	10.77%	5.97%	3.97%	1.87%	4.58%	6.53%	3.63%	2.72%	21.10	44.85%		
16-17	3.59%	7.54%	13.44%	17.46%	17.17%	12.15%	6.87%	3.43%	2.03%	4.39%	5.83%	3.43%	2.68%	21.00	42.03%		
17-18	3.23%	8.62%	15.44%	18.61%	16.12%	10.22%	5.67%	2.92%	1.81%	4.13%	6.02%	3.98%	2.34%	20.90	45.90%		
18-19	5.83%	11.59%	18.48%	19.28%	13.27%	6.87%	3.84%	2.42%	1.90%	5.05%	5.72%	2.89%	2.88%	20.50	55.18%		
19-20	5.48%	10.98%	18.68%	14.34%	6.88%	3.22%	2.08%	2.88%	4.87%	4.86%	5.83%	2.84%	2.84%	20.50	55.41%		
20-21	3.79%	8.93%	17.18%	20.45%	16.04%	9.28%	4.41%	2.27%	1.64%	3.59%	5.40%	3.51%	3.51%	20.80	50.35%		
21-22	3.91%	9.18%	16.65%	20.10%	16.41%	8.91%	3.64%	2.33%	1.84%	4.29%	5.74%	3.22%	3.78%	20.80	49.83%		
22-23	4.58%	10.70%	18.65%	19.69%	15.57%	8.24%	3.66%	2.27%	1.88%	4.83%	5.85%	2.81%	3.70%	20.80	51.82%		

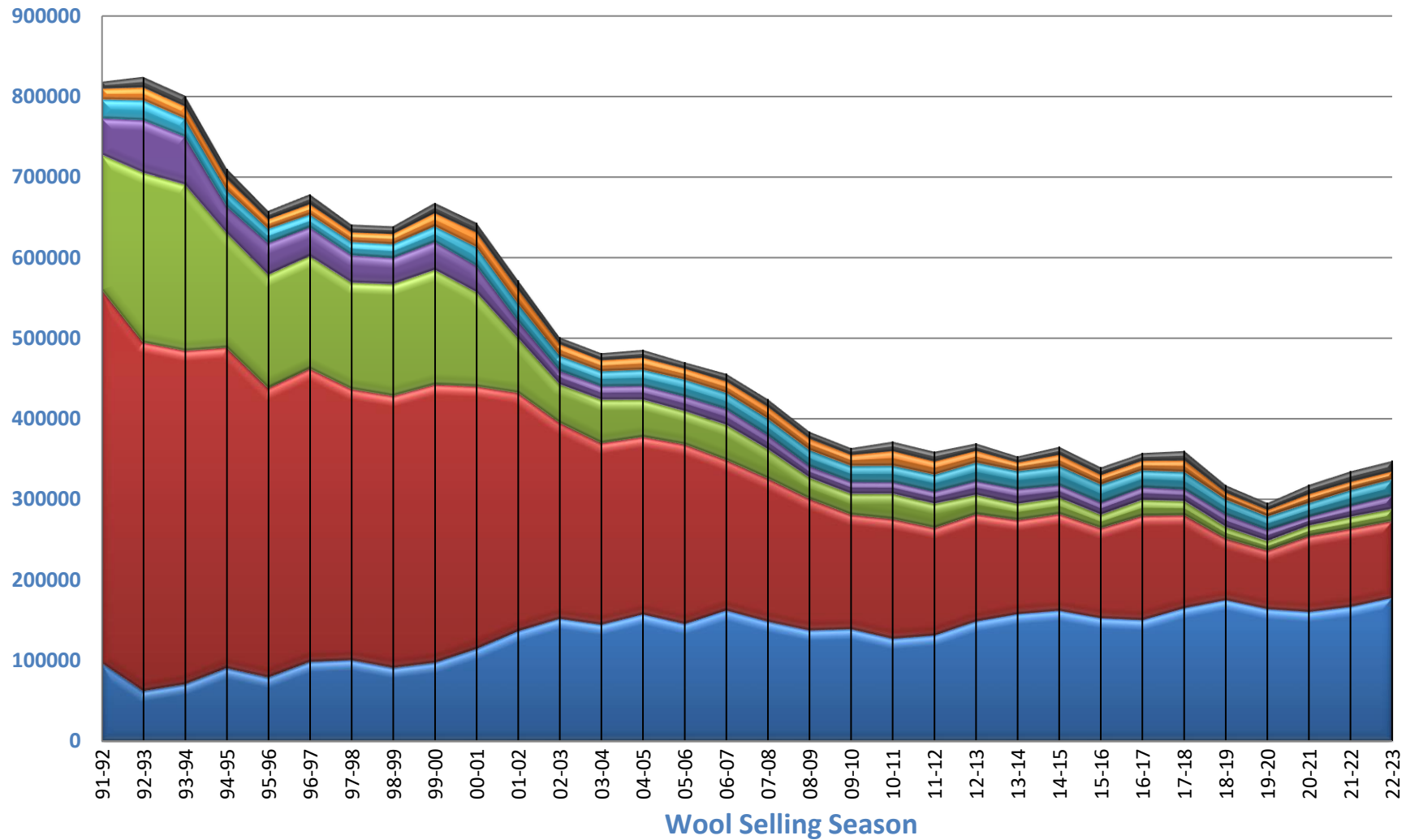
Season	GREASY WEIGHT (KGS)															TOTAL
	0.0-16.5	16.6-17.5	17.6-18.5	18.6-19.5	19.6-20.5	20.6-21.5	21.6-22.5	22.6-23.5	23.6-24.5	24.6-25.5	26.6-28.5	28.6-30.5	30.6+			
91-92	6770.40	55573.11	26139.18	64957.90	123990.04	175565.84	163627.91	109173.02	58150.27	44882.61	23349.12	13281.66	8270.88	817454.82		
92-93	1233.40	23191.89	15373.03	44486.91	99194.18	163990.49	169326.63	122420.77	65031.08	24539.62	15695.69	12914.69	8257.62	825762.61		
93-94	417.83	3781.90	19462.73	47206.36	97481.03	150184.01	166847.98	125654.89	80313.35	59094.94	22075.53	15312.52	13257.71	800485.24		
94-95	599.42	4345.36	24823.38	61089.18	108142.37	148156.24	141280.02	92513.43	49136.47	34019.95	19976.99	14293.63	12252.12	710196.506		
95-96	259.78	3974.50	21391.23	53689.18	100632.70	136510.79	121562.74	87128.66	53049.97	39201.52	17723.63	11533.79	10328.87	657879.551		
96-97	457.26	2815.40	65862.89	103370.68	130405.99	123846.11	99090.15	50295.21	35949.51	15857.63	12303.51	12229.63	67838.92	825762.61		
97-98	1347.01	7524.92	28675.13	63083.17	94945.75	124511.57	117044.92	82340.76	49284.09	34057.74	16443.13	11523.45	9657.90	640997.056		
98-99	1025.18	7108.06	26667.22	56452.36	93087.73	125293.29	118947.80	84333.30	48719.63	17060.79	13035.68	9327.56	6276.82	710196.506		
99-00	920.95	6340.91	28332.53	61896.43	96067.01	127540.68	121637.67	90474.71	51349.71	34791.25	19396.69	16347.10	12572.67	667895.073		
00-01	1604.85	8604.65	33292.63	71225.91	107542.43	119189.18	105426.90	73162.62	40976.50	23162.62	15695.69	12914.69	8257.62	825762.61		
01-02	1842.58	11435.42	41172.61	82161.50	113891.97	108942.64	73777.41	44325.47	23269.94	21253.29	21740.90	17915.37	11041.07	572001.304		
02-03	5075.68	19372.54	48885.10	78601.94	94904.11	88174.07	60123.81	33094.50	14541.53	16835.00	18735.00	14542.90	6298.10	50125.241		
03-04	3366.74	17315.97	47697.42	76252.74	88154.69	79872.36	57444.24	36020.77	17565.67	16860.46	18511.46	13867.05	8880.73	841795.011		
04-05	5851.13	20420.51	51221.36	79682.85	107300.36	174870.72	130193.29	159620.00	117922.05	20120.89	15482.11	12229.63	67838.92	825762.61		
05-06	6797.14	21947.60	45766.16	71230.23	87928.32	80662.89	54073.57	27568.41	13523.03	18462.17	21026.75	13866.12	7523.70	47031.987		
06-07	911.86	27009.98	53795.68	72573.27	77333.91	63389.92	45300.71	28073.84	15333.55	19748.34	20120.87	14671.37	9342.36	45325.545		
07-08	8257.61	22481.74	46407.16	71417.78	78100.61	60564.07	38423.28	23841.16	12955.79	14793.28	20447.14	15899.15	927.95	42466.628		
08-09	7789.57	21899.91	43965.83	63915.06	71113.37	67499.10	63318.17	46323.72	27328.16	16799.66	16940.49	16731.36	8457.73	84577.186		
09-10	8369.76	22468.35	46037.92	62376.12	63782.75	47972.36	30405.01	16672.51	8965.22	15034.36	19630.82	14063.81	8370.25	36493.722		
10-11	5688.03	19777.69	40965.13	62557.64	67062.70	50306.36	31305.93	19963.38	11098.77	14649.71	20412.03	18544.53	11577.04	37210.759		
11-12	6622.64	20272.14	43599.80	61656.17	69222.82	44243.28	29702.69	19159.88	10476.59	15207.65	20621.96	16771.70	11903.83	35955.721		
12-13	9420.17	23727.98	49714.22	64059.88	81944.12	64842.22	26911.14	14142.42	8416.84	17157.49	23824.14	14382.13	9203.31	46886.904		
13-14	13553.49	29784.39	51479.11	62943.58	65560.99	38374.83	22024.02	12067.04	7607.62	18459.08	24819.39	11019.18	7352.96	35688.910		
14-15	11624.90	29065.11	53841.12	67557.08	75200.19	62566.43	32669.04	20177.43	16010.80	23899.01	14198.12	9585.30	3656.89	36568.909		
15-16	13385.43	29052.90	49526.69	65050.45	65096.30	36096.11	23034.35	9878.39	6584.25	15573.31	22183.48	1327.91	947.95	34061.963		
16-17	12860.37	28990.50	48691.44	62462.36	64342.14	42811.93	12386.61	7250.91	16792.16	20861.98	12704.62	8651.66	3674.86	36748.624		
17-18	11620.35	31069.55	55634.86	67078.74	42806.67	36283.12	20424.82	10531.45	6569.97	14872.37	21679.20	14356.68	11691.06	36040.580		
18-19	18442.88	36840.95	58742.95	61306.16	42198.41	21806.80	12222.13	7700.57	6031.34	16061.48	18713.99	9178.128	9049.828	31795.792		
19-20	16149.28	32560.23	55326.95	60007.24	42305.62	20660.77	10522.51	5318.88	1381.587	16763.29	8503.91	8474.88	2850.874	28508.874		
20-21	12076.80	28424.59	54710.29	65105.73	51064.07	29530.72	14047.88	7240.82	5211.06	11429.17	17207.45	11165.79	11163.04	31837.823		
21-22	13083.88	30758.95	57938.21	67348.71	55008.54	29874.24	12207.64	7816.94	6161.87	14364.71	19238.61	10772.05	12682.74	33313.908		
22-23	15932.49	35040.23	58634.05	68517.99	54170.98	28681.47	127367.09	7887.05	6551.49	16823.29	20373.91	9770.32	12877.27	34802.450		

Season	GREASY WEIGHT (Tonnes)														
--------	------------------------	--	--	--	--	--	--	--	--	--	--	--	--	--	--



Wool Production (kgs) in Micron Bands : 1992 - 2023

■ 30.6+ ■ 28.5-30.5 ■ 26.6-28.5 ■ 24.6-26.5 ■ 22.6-24.5 ■ 19.6-22.5 ■ 0.00-19.5





Australian Wool Clip Average MFD : 1992 to 2023

